

Job Name/Location:

Tag #:

Date:

For: File Resubmit
Approval Other_____

PO No.:

Architect: GC:

Engr: Mech:

Rep: (Company) (Project Manager)

LC248HV

Single Zone 3x3 Four-Way Ceiling Cassette

Outdoor Unit (ODU) - LUU249HV, Indoor Unit (IDU) - LCN248HV



Performance:

Cooling:

| | |
|--|-------------------------|
| Cooling Capacity (Min~Rated~Max) (Btu/h) | 9,600 ~ 24,000 ~ 28,000 |
| SEER | 20 |
| EER | 12.6 |

SEER - Seasonal Energy Efficiency Ratio EER - Energy Efficiency Ratio

Heating:

| | |
|--|--------------------------|
| Heating Capacity (Min~Rated~Max) (Btu/h) | 10,800 ~ 27,000 ~ 30,000 |
| HSPF | 10.5 |
| Max. Heating @ Indoor 70°F DB | |
| Outdoor 17°F DB | 26,000 |
| Outdoor 5°F DB | 23,600 |
| Outdoor -4°F DB | 20,760 |

HSPF - Heating Seasonal Performance Factor

Electrical:

| | |
|---------------------------|--------------|
| Power Supply (V/Hz/Ø) | 208-230/60/1 |
| MOP (A) | 30 |
| MCA (A) | 20 |
| Cooling Rated Amps (A) | 15.7 |
| Heating Rated Amps (A) | 15.7 |
| Compressor (A) | 13.5 |
| Fan Motor (IDU + ODU) (A) | 0.6 + 1.6 |
| Cooling Power Input (kW) | 1.9 |
| Heating Power Input (kW) | 2.3 |

MOP - Maximum Overcurrent Protection MCA - Minimum Circuit Ampacity

Piping:

| | |
|--|-----------|
| Liquid (in., O.D.) | 3/8 |
| Vapor (in., O.D.) | 5/8 |
| Additional Refrigerant (oz./ft.) | 0.43 |
| Min. / Max. Pipe Length (ft.) ² | 6.6 / 164 |
| Piping Length (no add'l refriger., ft.) | 24.6 |
| Max. Elevation (ft.) | 98.4 |

Features:

- Inverter (Variable Speed Compressor)
- Internal Condensate Pump
- Swirl Wind
- Jet Cool
- Auto Restart
- Auto Changeover
- Ultra-quiet Turbo Fan
- Night Quiet Operation
- Optional Wi-Fi Control

Included Accessories:

- Wireless Remote Controller - PQWRHQ0FDB

Required Accessories:

- Grille Kit - PT-MCHWO

Optional Accessories:

- Simple Controller - PREMT000
- Premium Controller - PREMTA000
- MultiSITE™ CRC1 - PREMTBVC0
- MultiSITE CRC1+ - PREMTBVC1
- MultiSITE Comm. Mgr. - PBACNBTR0A
- PI-485 - PMNFP14A1
- Dry Contact - PDRYCB300
- LonWorks® Gateway - PLNWKB100
- AC Smart 5 BACnet® Gateway - PACS5A000
- ACP 5 BACnet Gateway - PACP5A000
- Ventilation Kit + Flange³ - PTVK410 PTVK420
- Flange - PTVK430
- Auto Elevation Kit - PTEGMO
- Wi-Fi Module - PWFMD200
- Base Pan Heater - PQSH1200
- Low Ambient Kit (Cooling operation to -40°C) - PAG-HS6/PAG-HS7/PQCA0
- Aux Heater Relay Kit- PRARHO
- RS3 Remote Controller - PREMTB100

Operating Range:

Outdoor Unit:

| | |
|-----------------|----------|
| Cooling (°F DB) | 5 ~ 118 |
| Heating (°F WB) | -4 ~ +64 |

Indoor Unit:

| | |
|-----------------|---------|
| Cooling (°F WB) | 57 ~ 77 |
| Heating (°F DB) | 59 ~ 81 |

System Data:

| | |
|--|---------------|
| Refrigerant Type | R410A |
| Refrigerant Control | EEV |
| Refrigerant Charge (lbs.) | 4.41 |
| IDU Sound Pressure (H/M/L) (±1 dB[A]) ³ | 38 / 36 / 34 |
| ODU Sound Pressure (Cooling / Heating) (±1 dB[A]) ³ | 48 / 52 |
| ODU Net / Shipping Weight (lbs.) | 130.0 / 143.3 |
| IDU Net / Shipping Weight (lbs.) | 47.2 / 57.3 |
| Grille Net / Shipping Weight (lbs.) | 14 / 21 |
| Heat Exchanger Coating | GoldFin™ |

Fan:

| | |
|-----------------------------|---------------------------------------|
| ODU Type | Propeller |
| IDU Type | Cross Flow |
| Fan Speeds (Fan/Cool/Heat) | 4 / 5 / 4 |
| Quantity (ODU + IDU) | 1 + 1 |
| Motor/Drive | Brushless Digitally Controlled/Direct |
| ODU Air Flow Rate (CFM) | 2,048 |
| IDU Air Flow (CFM H/M/L) | 600 / 530 / 459 |
| Dehumidification (pts./hr.) | 4.5 |

Notes:

1. Acceptable operating voltage: 187V-253V.
2. Piping lengths are equivalent.
3. Must comply with applicable codes for fire isolation dampers.
4. Sound Pressure levels are tested in an anechoic chamber under ISO Standard 3745.
5. All communication / connection (power) cable from the outdoor unit to the indoor unit is field supplied and must be a minimum of four-conductor, 14 AWG, stranded, shielded or unshielded (if shielded, it must be grounded to the chassis of the outdoor unit only), and must comply with applicable local and national codes.
6. This unit comes with a dry helium charge.
7. This data is rated 0 ft. above sea level, with 24.6 ft. of refrigerant line and a 0 ft. level difference between outdoor and indoor units.
8. Power wiring cable size must comply with the applicable local and national code.
9. Must follow installation instructions in the applicable LG installation manual.

BACnet® is a registered trademark of ASHRAE. LonWorks® is a trademark of Echelon Corporation.

For a complete list of available accessories, contact your LG representative.

For continual product development, LG reserves the right to change specifications without notice.

© LG Electronics Canada, Inc., North York, ON. All rights reserved. "LG Life's Good" is a registered trademark of LG Corp. /www.lgdfs.ca



SB_SZ_FourWayCassette3x3_LC248HV_2019_09_04_142457

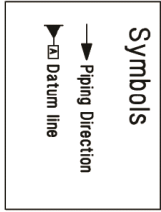
LC248HV
 Single Zone 3x3 Four-Way Ceiling Cassette
 Outdoor Unit (ODU) - LUU249HV, Indoor Unit (IDU) - LCN248HV



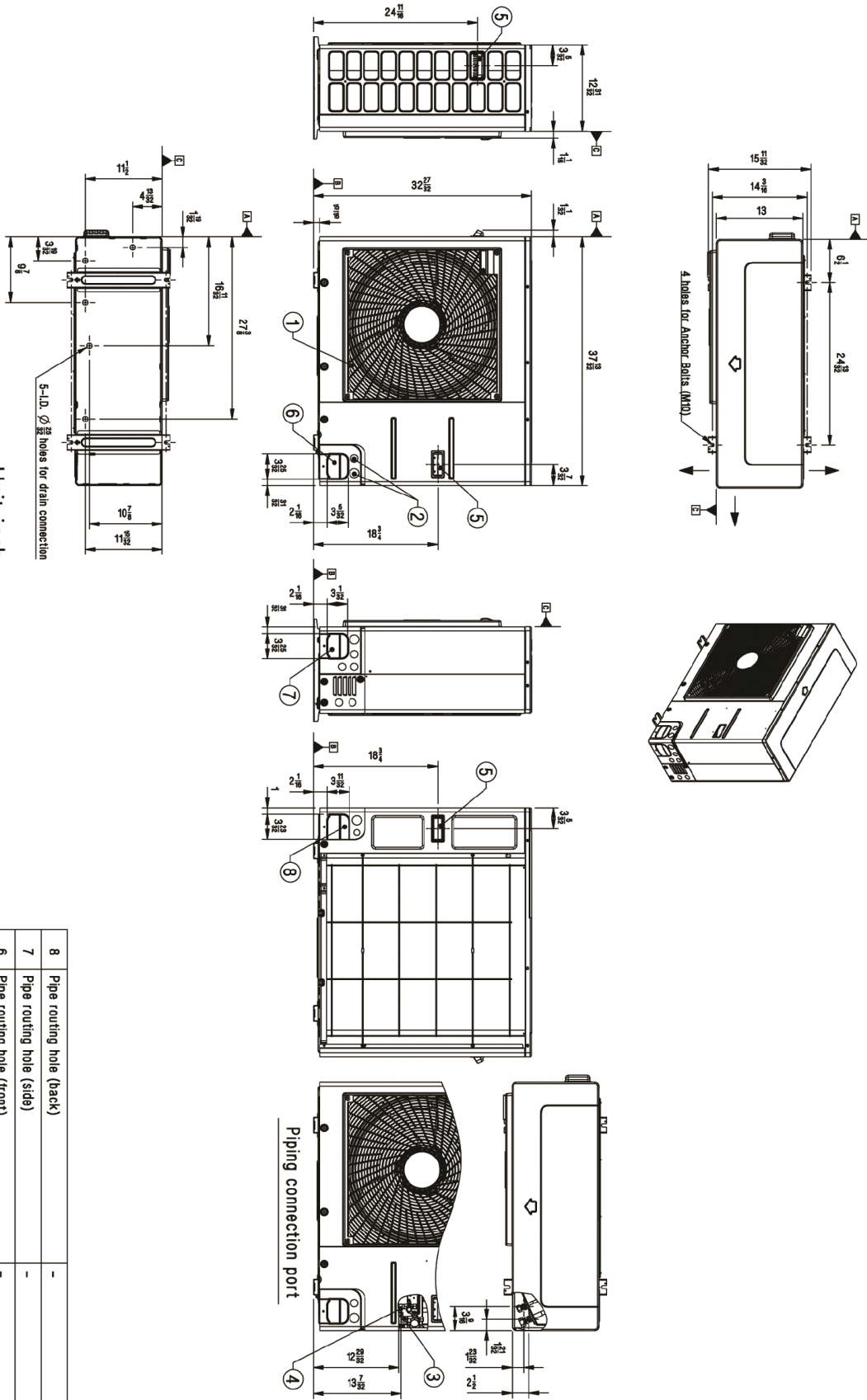
Tag No.: _____

Date: _____

PO No.: _____



Unit: inch



| No. | Part Name | Description |
|-----|------------------------------------|-------------|
| 1 | Air Outlet | - |
| 2 | Power and communication cable Hole | - |
| 3 | Gas Pipe Connection | Flare joint |
| 4 | Liquid Pipe Connection | Flare joint |
| 5 | Handle | - |
| 6 | Pipe routing hole (front) | - |
| 7 | Pipe routing hole (side) | - |
| 8 | Pipe routing hole (back) | - |

LC248HV

Single Zone 3x3 Four-Way Ceiling Cassette

Outdoor Unit (ODU) - LUU249HV, Indoor Unit (IDU) - LCN248HV



Tag No.: _____

Date: _____

PO No.: _____

